



networks@work

# Quick Install Guide

Wireless-G Broadband Multimedia Router

Complex NetPassage 27G



---

## TABLE OF CONTENTS

<b>1: INTRODUCTION .....</b>	<b>1</b>
<i>Package Content .....</i>	<i>1</i>
<b>2: NETWORK INFRASTRUCTURE .....</b>	<b>2</b>
<b>3: LET'S GET GOING-HARDWARE SETUP .....</b>	<b>3</b>
<i>Power Up in 4 Steps.....</i>	<i>3</i>
<b>4: GETTING STARTED WITH WIZARD SETUP .....</b>	<b>4</b>
<b>5: CONFIGURING TCP/IP SETTINGS.....</b>	<b>12</b>
<b>6: CONFIGURING WIRELESS NETWORK CONNECTION.....</b>	<b>14</b>
<b>7: SCHEMATIC OVERVIEW .....</b>	<b>15</b>
<b>8: TECHNICAL SPECIFICATION .....</b>	<b>18</b>

# 1: Introduction

Thank you for purchasing the Wireless-G Broadband Multimedia Router. This Wireless-G router with two USB1.1 ports connects the USB devices to be shared with others. Typical devices include printers and hard drives. There are endless possibilities with what you can do using this Multimedia router. Download songs and store them in the shared hard drive so others can play them as well. Download photos save them in the shared USB hard disk and print them to the shared USB printer.



Of course, it is also a full-fledge router allowing you to share the broadband Internet connection with several users in your home. The router is, additionally, equipped with advanced features that will make it suitable for the office as well.

## Package Content

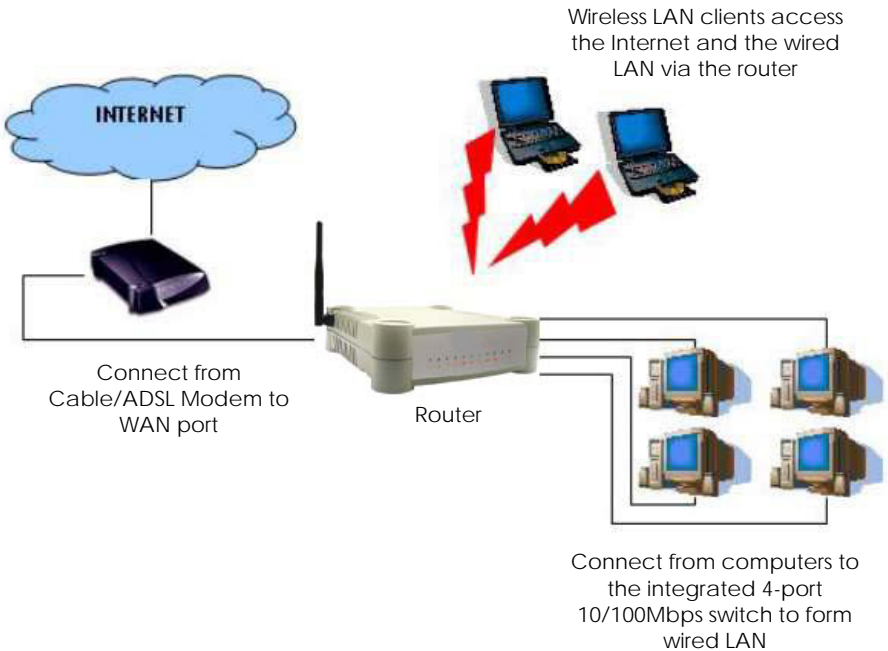
The router retail package contains the following items to start you off:

- 1x Wireless-G Router
- 1x External Power Adapter
- 1x Quick Install Guide
- 1x Product CD (containing User's Manual, Firmware Recovery Tool & Utilities)

## 2: Network Infrastructure

Only a few simple steps are required to set up the router to begin sharing your broadband Internet connection between your wired and wireless network clients.

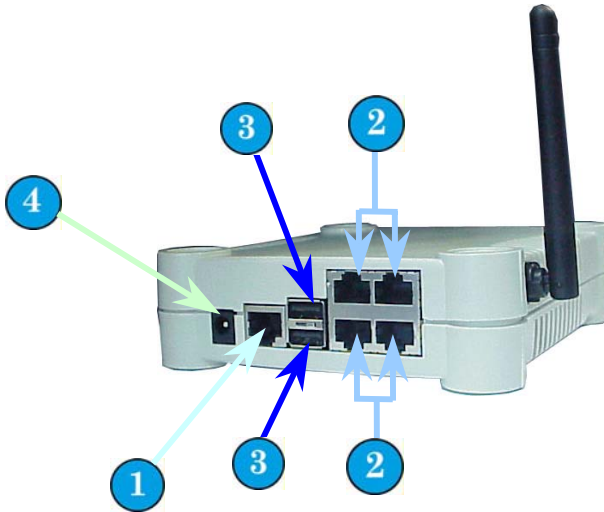
### Example: Broadband Internet Access Distribution to a Fast Ethernet Network & Wireless Network



## 3: Let's Get Going-Hardware Setup

### Power Up in 4 Steps

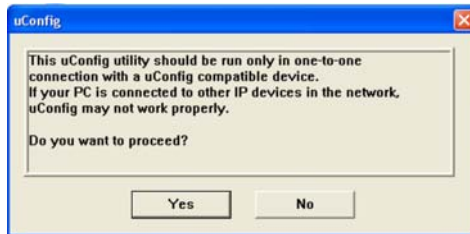
In 4 simple steps, you shall have your router wired and functional. After which, you may proceed to the software configuration to get ready to surf the Internet at high-speed!



- 1 Connect one end of the Ethernet cable to your Cable/ADSL modem, and then connect the other cable end to the socket labeled WAN on the router.
- 2 Connect one of the LAN ports to a PC with an RJ45 Ethernet cable.
- 3 Connect the USB devices (such as storage disk or printer) to the USB ports of the router.
- 4 Next, plug in the power adapter that is supplied to the main electrical supply, and connect the power plug to the socket on the router. Please do not turn on the power during the installation for safety reasons. Reboot the PC.

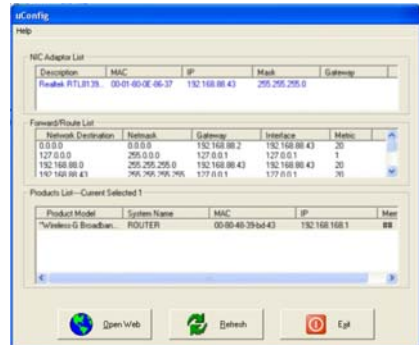
## 4: Getting Started with Wizard Setup

1. Insert the Product CD to your CD-ROM drive, go to the **Utilities** section and run the **uConfig** program.
2. The program will prompt you with the following message. Click on the **Yes** button to proceed.



3. Select **Wireless-G Broadband Multimedia ROUTER** and click on **OpenWeb** button.

Alternatively, you may also launch your Internet Explorer browser (or Netscape). At the Address field, key in **http://192.168.168.1**.



Next, the system will prompt you not to close the uConfig program until you wish to exit your web-based interface. Click **OK** button to proceed.

- Next, an authentication page will appear as shown on the right. The default password, which is *password*, is pre-entered in the field provided. Click on the **LOGIN!** button to access the main page of the router.



- Check the radio button next to **Basic Setup**. Click on the **Next** button.



6. The first page of the Setup Wizard will appear, showing an overview of the basic setup.

- **Internet Connection**

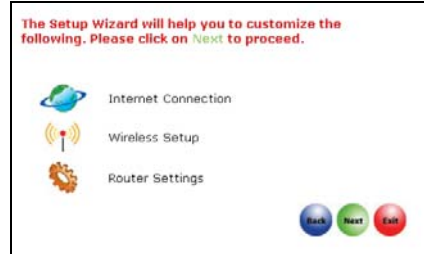
This functionality lets you specify the type of Internet Connection you are using.

- **Wireless Setup**

This functionality lets you configure the settings of the router to suit your wireless network.

- **Router Settings**

This functionality lets you identify the router and create a workgroup for the router. It also lets you set up your local time zone.





7. Select your WAN connection, from the following types of **Internet Connection**:

- **Static IP**

For configuring **Static IP**, you need to manually enter the IP Address, Network Mask and Gateway IP Address that are provided by your ISP.

- **Dynamic IP**

(used as an example in this guide)

- **PPPoE**

For configuring **PPPoE**, you have to enter the account Username and Password that are provided by your ISP.

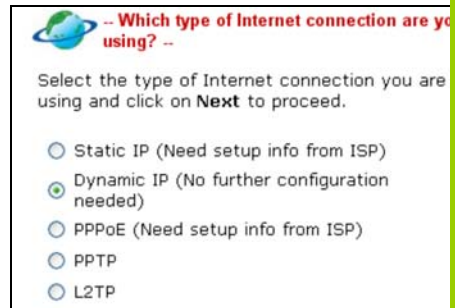
- **PPTP**

For configuring **PPTP**, you have to enter the account Username, Password, Network Mask and VPN Server that are provided by your ISP. Take note that VPN Server refers to the IP address of your ISP's PPTP server.

- **L2TP**

For configuring **L2TP**, you have to click on the **Change** button and enter the account Username, Password, Network Mask and VPN Server that are provided by your ISP. Take note that VPN Server refers to the IP address of your ISP's L2TP server.

To proceed, click on the **Next** button.



8. To set up your wireless network, configure the following parameters:

- **SSID**

The default SSID is 'router'. Click on the **Change** button to enter your preferred SSID name.

-- Customising WLAN Setup --

Select the type of wlan connection and click on **Next** to proceed.

SSID:  Change

Channel:

Security Mode:

Back Next Exit

- **Channel**

Click on the down-arrow button next to **Channel**. From the list, select your preferred wireless network channel.

Channel:

Security Mode:

Back Next Exit

- **Security Mode**

You may choose to enable **WEP** or **WPA-PSK** to secure your wireless network connection.

Security Mode:

Back Next Exit

If **WEP** is enabled, select Hex or ASCII for the key string type to be used. Select **64Bit** or **128Bit** for the transmission key. Then enter the corresponding transmission key.

Use the **Reset** button to clear the transmission key.

-- WEP key --

Input key and click on **Next** to proceed.

Key String Type:

Hex (0~9, a~f, A~F) Length 10 or 26

Ascii (0~9, a~z, A~Z) Length 5 or 13

Transmission key:  64Bit  128Bit

Reset

Back Next Exit

If **WPA-PSK** is enabled, select **Hex** or **ASCII** for the key string type to be used. Change the default **WPA-PSK key** that is set to '11111111'. The default **GTK update** is '600' (recommended value)

To proceed, click on the **Next** button.

Please ensure that your router and wireless client settings match.

9. To check your system's identity and time zone:

- **System Name**

The default name is 'ROUTER'. You may change it to a better name that will better identify your router.

- **NetBIOS Name**

This is the name under which the router will appear when you browse the MS Windows Network Neighbourhood. You can change it to another name that will help you to better identify your router.

- **Workgroup**

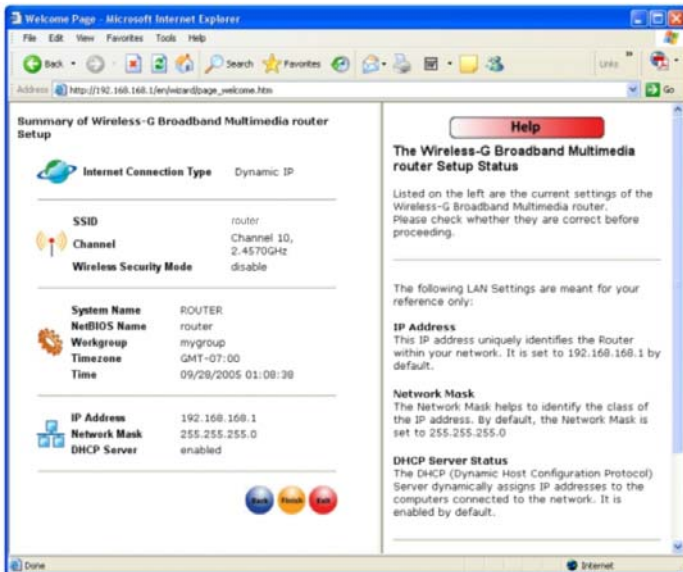
The default name is 'mygroup'. Create an appropriate name for the workgroup to include your router and network clients.

- **Time Zone**

Choose your local time zone from the drop-down list.

To proceed, click on the **Next** button.

10. You will see a summary of the router setup appear. Check if the settings such as WAN IP Address, etc are correct.



11. Click on the **Back** button to go back to the previous page or click on the **Finish** button to save the settings and reboot the router.



-- System is rebooting, please wait for a while -- <http://192.168.168.1>

12. You will be returned to the Login page after 30 seconds.



**Note:** The factory default password to access the web-based interface is <password>. It is recommended that you change to another stronger password by following the steps described in section **System Tools : Change Password**.

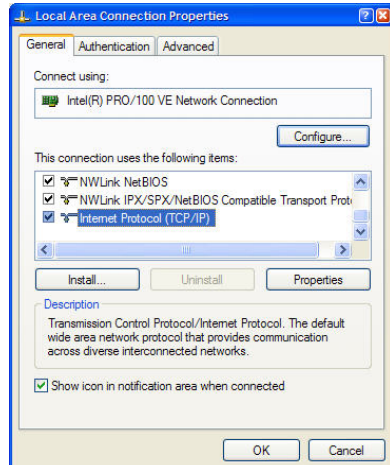
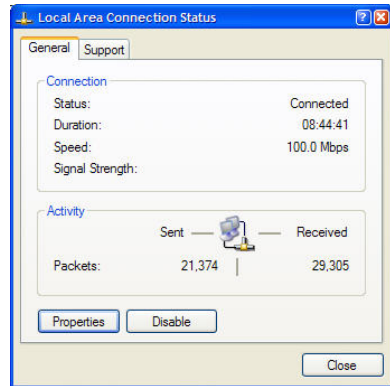
## 5: Configuring TCP/IP Settings

You should configure your PC or wireless client to obtain IP address automatically. For users of Microsoft Windows XP, you may configure the TCP/IP settings as follows:

1. Click the **Start** button. Select **Settings** and click the **Control Panel** icon. Then double-click the **Network Connection** icon.

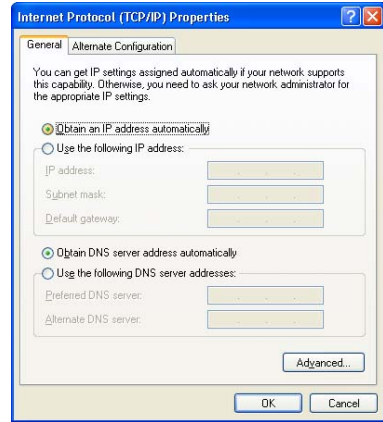
Right click on **Local Area Connection** or **Wireless Network Connection** corresponding to the Ethernet adapter you wish to connect to the router.

2. Under **General** tab at **This connection uses the following item**, make sure the box next to **Internet Protocol (TCP/IP)** is checked. Then highlight **Internet Protocol (TCP/IP)**, and click the **Properties** button.



3. Check the radio button next to **Obtain an IP address automatically**.

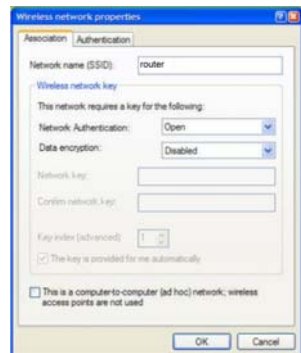
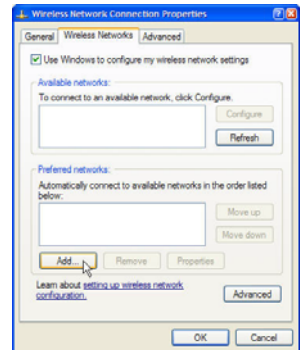
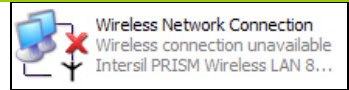
Then click the **OK** button on this page, and the **OK** button on the previous page it returns you to.



## 6: Configuring Wireless Network Connection

In the following chapters, you will find information on how to configure the router to function in your network, to access the Internet and to begin sharing the connection with your wired and wireless clients.

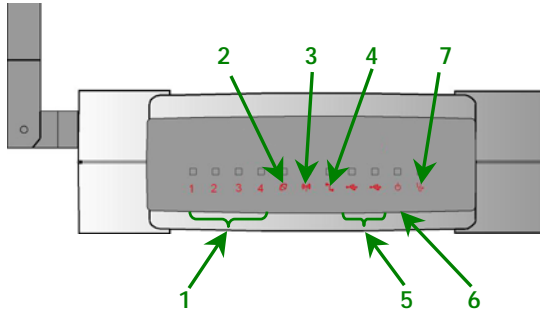
1. Right-click on **Wireless Network Connection** corresponding to the wireless Ethernet adapter you wish to connect with the router, and click on **Properties**.
2. At the **Wireless Networks** tab, click on the **Add** button under **Preferred Networks**.
3. At the **Network name (SSID)** field, type in 'router' (the router's factory default). Click **OK**.





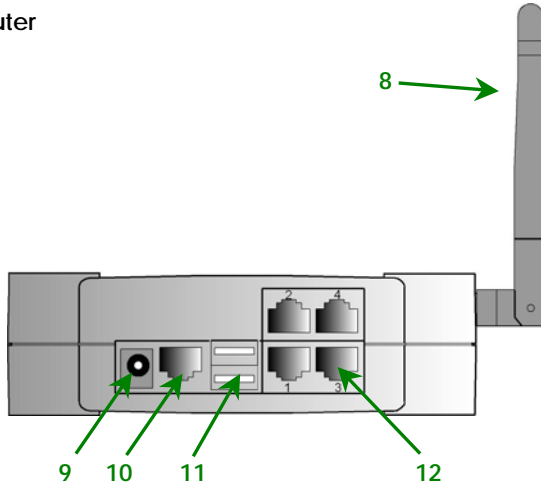
# 7: Schematic Overview

Front View of Router



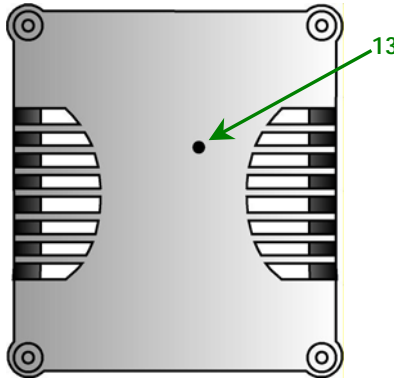
	Name	Description	
1	LAN Link/Act LED 1, 2, 3, 4	Steady GREEN	LAN connection is on.
		Flashing GREEN	Data transmission at LAN connection.
2	WAN LED	Steady GREEN	WAN connection is on.
3	Wireless LAN Link/Act LED	Steady GREEN	At least one wireless client is present.
		Flashing GREEN	Activity is detected in the wireless network.
4	WAN Link/Act LED	Flashing GREEN	Data transmission at WAN connection.
5	USB LEDs 1, 2	Steady GREEN	USB device is detected.
		Flashing GREEN	Data transmission at respective USB ports.
6	Power LED	Steady BLUE	The device is powered up.
7	Diagnostic LED	Flashing GREEN	This indicates that the firmware has become corrupted.

## Back View of Router



	Name	Description
8	External Antenna	Foldable, non-detachable antenna
9	5 VDC	Power Input
10	WAN (RJ45 Port)	WAN port connects to Cable/ADSL modem
11	USB Ports 1, 2	Integrated USB1.1 Ports
12	LAN RJ45 Ports 1, 2, 3, 4	Integrated LAN Switch Ports

Bottom View of Router



	Name	Description
13	Reset Push button	<p>To reboot, press once.</p> <p>To reset password, press and hold the button for 5 seconds. The DIAG light will flash fast for about 5 flashes/sec before releasing the button.</p> <p>To restore the factory default settings, press and hold the button for more than 10 seconds. The DIAG light will flash slowly for about 10 flashes/sec before releasing the button.</p>

## 8: Technical Specification

<b>Industrial Standards</b>	<p><b>Wired:</b></p> <ul style="list-style-type: none"> <li>• IEEE 802.3 10Base-T</li> <li>• IEEE 802.3u 100Base-Tx</li> <li>• IEEE 802.3x Flow Control</li> </ul> <p><b>Wireless:</b></p> <ul style="list-style-type: none"> <li>• IEEE 802.11b</li> <li>• IEEE 802.11g</li> </ul>
<b>WAN Interface</b>	1x Auto MDI/MDI-X RJ45 Ethernet Port for external Cable/ADSL modem
<b>WAN Type</b>	<ul style="list-style-type: none"> <li>• Static IP</li> <li>• Dynamic IP</li> <li>• PPP over Ethernet (PPPoE)</li> <li>• Point to Point Tunneling Protocol (PPTP)</li> <li>• Layer 3 Tunneling Protocol (L2TP)</li> </ul>
<b>LAN/WLAN Interface</b>	<p><b>Wired:</b></p> <ul style="list-style-type: none"> <li>• Integrated 4x Auto MDI/MDI-X RJ45 Ethernet Port for 10/100Mbps Switch</li> </ul> <p><b>Wireless:</b></p> <ul style="list-style-type: none"> <li>• Operating frequency channels of: <ul style="list-style-type: none"> <li>- 11 Channels 2.400~2.4835, US, Canada</li> <li>- 13 Channels, 2.400~2.4970, Europe</li> <li>- 4 Channels 2.400~2.4835, France</li> </ul> </li> <li>• Direct Sequence Spread Spectrum modulation, Orthogonal Frequency Division Multiplexing modulation</li> <li>• Data rates: 54Mbps, 48Mbps, 36Mbps, 24Mbps, 18Mbps, 12Mbps, 11Mbps, 9Mbps, 6Mbps, 5.5Mbps, 2Mbps, 1Mbps</li> <li>• Security: <ul style="list-style-type: none"> <li>- 64-bit/128-bit WEP</li> <li>- WPA, WPA-PSK</li> <li>- Wireless Pseudo VLAN</li> </ul> </li> </ul>

<b>USB1.1 Ports</b>	<i>2X integrated USB ports supporting:</i> <ul style="list-style-type: none"> <li>• Print Server</li> <li>• Storage disk drive</li> </ul>
<b>IP Addressing</b>	All Classful/Classless subnets
<b>Built-in DHCP Server</b>	Yes
<b>DHCP Reservation</b>	Yes
<b>NAT Firewall</b>	Yes
<b>Stateful Packet Inspection (SPI) Firewall</b>	Yes
<b>Load-Balancing/Fail-Over Redundancy</b>	Parallel Broadband
<b>Virtual Server</b>	IP and Port Forwarding, De-Militarized Zone hosting
<b>IP Packet Filtering</b>	Time-based, TCP Port, Source IP Filtering
<b>Multicast Filtering</b>	Yes
<b>URL Filtering</b>	Yes
<b>IP Routing</b>	Static Routing Entry
<b>VPN Client Pass-Through</b>	PPTP, IPsec
<b>Configuration Interface</b>	Web-based Configuration Menu
<b>Profile Backup and Restore</b>	Yes
<b>Firmware Upgradeable</b>	Yes
<b>Physical and Environment</b>	Operating Temperature: 0°C to 40°C Storage Temperature: -20°C to 70°C Operating Humidity: 10% to 80% RH Storage Humidity: 5% to 90% RH
<b>Physical Dimension</b>	174mm x 104mm x 40 mm (L x W x H)

---

**Disclaimer:** **Compex, Inc.** provides this guide without warranty of any kind, either expressed or implied, including but not limited to the implied warranties of merchantability and fitness for a particular purpose. **Compex, Inc.** may make improvements and/or changes to the product and/or specifications of the product described in this guide, without prior notice. **Compex, Inc.** will not be liable for any technical inaccuracies or typographical errors found in this guide. Changes are periodically made to the information contained herein and will be incorporated into later versions of the guide. The information contained is subject to change without prior notice.

**Trademark Information:** **Compex®**, **ReadyLINK®** and **MicroHub®** are registered trademarks of **Compex, Inc.** **Microsoft Windows** and the **Windows logo** are the trademarks of **Microsoft Corp.** **NetWare** is the registered trademark of **Novell Inc.** All other brand and product names are trademarks or registered trademarks of their respective owners.

**Notice:** Copyrights © 2006 by **Compex, Inc.** All rights reserved. Reproduction, adaptation, or translation without prior permission of **Compex, Inc.** is prohibited, except as allowed under the copyright laws.

Manual Revision by Daniel

Manual Number: M-0412-V1.2C    Version 1.2, September 2006

**FCC NOTICE:** This device has been tested and found to comply with the limits for a **Class B** digital device, pursuant to **Part 15 of the FCC Rules**. These limits are designed to provide reasonable protection against harmful interference in a residential installation. This device generates, uses and can radiate radio frequency energy and, if not installed and used in accordance with the instructions, may cause harmful interference to radio communications. However, there is no guarantee that interference will not occur in a particular installation. If this device does cause harmful interference to radio or television reception, the user is encouraged to try to correct the interference by one or more of the following measures:

- ♦ Reorient or relocate the receiving antenna.
- ♦ Increase the separation between the computer and receiver.
- ♦ Connect the computer into an outlet on a circuit different from that to which the receiver is connected.
- ♦ Consult the dealer or an experienced radio / TV technician for help.

**Caution:** Any changes or modifications not expressly approved by the grantee of this device could void the user's authority to operate the equipment.

**FCC Compliance Statement:** This device complies with Part 15 of the FCC Rules. Operation is subject to the following two conditions:

- (1) This device may not cause harmful interference, and
- (2) This device must accept any interference received, including interference that may cause undesired operation.

Products that contain a radio transmitter are labeled with FCC ID and may also carry the FCC logo.

**Caution:** Exposure to Radio Frequency Radiation.

To comply with the FCC RF exposure compliance requirements, the following antenna installation and device operating configurations must be satisfied:

- a. For configurations using the integral antenna, the separation distance between the antenna(s) and any person's body (including hands, wrists, feet and ankles) must be at least 2.5cm (1 inch).
- b. For configurations using an approved external antenna, the separation distance between the antenna and any person's body (including hands, wrists, feet and ankles) must be at least 20cm (8 inch).

---

The transmitter shall not be collocated with other transmitters or antennas.

**ICES 003 Statement**

This Class B digital apparatus complies with Canadian ICES-003.

**DECLARATION OF CONFORMITY: *Compex, Inc. declares that the product:***

**Product Name:** Compex Wireless-G 54Mbps XR Router

**Model No.:** NetPassage 27G conforms to the following Product Standards:

This device complies with the Electromagnetic Compatibility Directive (89/336/EEC) issued by the Commission of the European Community. Compliance with this directive implies conformity to the following European Norms (in brackets are the equivalent international standards.)

**Electromagnetic Interference (Conduction and Radiation):** EN 55022 (CISPR 22)

**Electromagnetic Immunity:** EN 55024 (IEC61000-4-2,3,4,5,6,8,11)

**Low Voltage Directive:** EN 60 950: 1992+A1: 1993+A2: 1993+A3: 1995+A4: 1996+A11:1997.

***Therefore, this product is in conformity with the following regional standards: FCC Class B:*** following the provisions of FCC Part 15 directive; **CE Mark:** following the provisions of the EC directive.

**DECLARATION OF CONFORMITY: *Compex, Inc. declares that:***

The wireless card in this product complies with the R&TTE Directive (1999/5/EC) issued by the Commission of the European Community. Compliance with this directive implies conformity to the following European Norms (in brackets are the equivalent international standards.)

**EMC Standards:** FCC: 47 CFR Part 15, Subpart B, 47 CFR Part 15, Subpart C (Section 15.247); CE: EN 300 328-2, EN 300 826 (EN 301 489-17)

***Therefore, this product is in conformity with the following regional standards: FCC Class B:*** following the provisions of FCC Part 15 directive; **CE Mark:** following the provisions of the EC directive.

**Manufacturer's Name:** Compex, Inc.

**Address:** 840 Columbia Street, Suite B

Brea, CA 92821, USA

<b>WARRANTY REGISTRATION CARD</b>		[M-0088-V2.4C]	
Register via the Internet at <a href="http://www.cpx.com">http://www.cpx.com</a> or <a href="http://www.compex.com.sg">http://www.compex.com.sg</a>			
To activate the warranty, please complete this card and return to Compex within ninety (90) days from the date of purchase.			
Please e-mail this warranty card to <b>support@compex.com.sg</b> .			
Product:	Purchase Date:	Model:	Serial No:
Name:		E-mail:	
Company:			
Address:			
Postal/Zip Code:		Country:	
Phone: (     )			

**Note:**

For purchases within U.S.A and Canada, please fax to Compex, Inc. at  
(714) 482 0332

For purchases outside U.S.A and Canada, please fax to Compex Systems Pte Ltd at (65)  
6280-9947



Manual Revision: Daniel  
Manual Number: M-0512-V1.2E  
Version 1.2  
September 2006

---